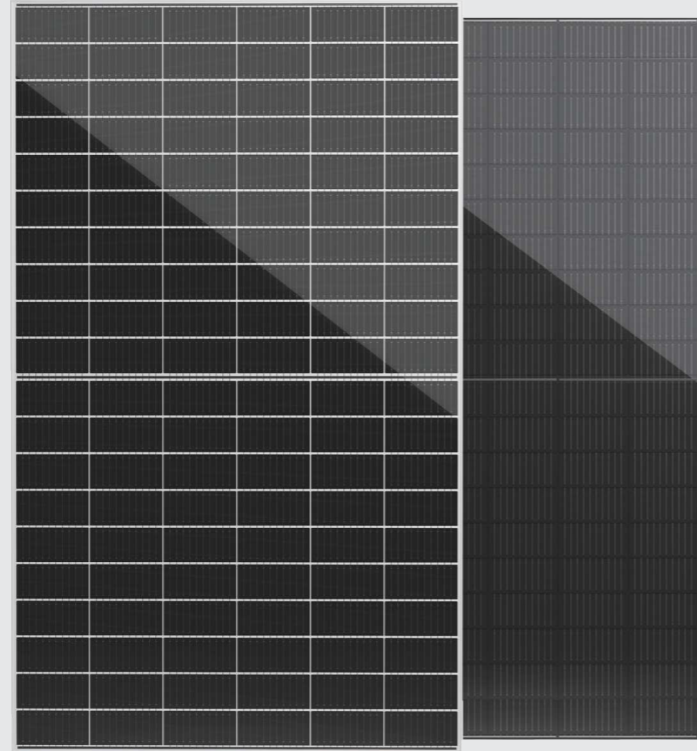
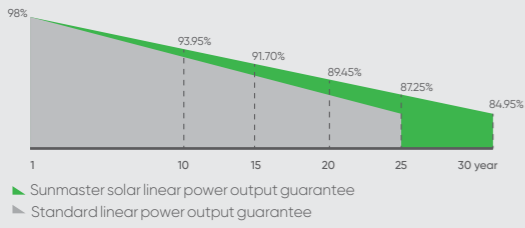


SunMaster 5M

SM580-605W(120)

210mm Cells Mono PERC with MBB & Half-cut Technology

Quality Guarantee



Standard

All Black

580-605W

-0.55%
power attenuation

30years
Power warranty

Comprehensive Products and System Certificates



- IEC 61215 / IEC 61730 / CE / INMETRO
- ISO 9001-
- 2015/Quality management system
- ISO 14001-
- 2015/Standards for environmental management system
- ISO 45001-
- 2018/International standards for occupational health & safety

Key Features

- Optimal Process Design**
166mm+9BB+Half-cut, higher power output
- Select Grade A Crystalline Silicon Solar Cells**
Grade A crystalline silicon solar cells make high-power output with cost-effective
- Stable Generation Performance**
Power attenuation: first year ≤2%, 0.55% per year from 2-25
- Process Upgraded**
PID Resistant
Lower risk of hot spot and stronger anti-PID ability
- Higher Power Gains and Lower Losses**
Excellent low irradiance performance and low shadow loss
- Strong Environmental Adaptability and Great Durability**
Certified by Dust-Sand, Salt-Mist, Ammonia etc. weather resistance tests and enhanced mechanical load: wind load (2400 Pa) and snow load (5400 Pa)

Mechanical Characteristic

Cell type	Monocrystalline PERC 210*105mm
Number of cells	120 (6*20)
Module dimensions	2172x1303x35mm (85.51x51.30x1.38inches)
Weight	28.5kg (63.27lbs)
Front cover	3.2mm(0.13inches) tempered glass with AR coating
Frame	Anodized aluminum alloy
Junction box	≥IP68 & UL
Cable	4mm ² (0.006inches ²), Portrait: 300mm (11.81inches); Landscape: 1300mm (51.18inches)
Connector	MC4 or MC4 compatible

Temperature Characteristics

Nominal Operating Cell Temperature (NOCT)	43°C±2°C
Temperature Coefficients of Pmax	-0.36% /°C
Temperature Coefficients of Voc	-0.28% /°C
Temperature Coefficients of Isc	0.05% /°C

Packaging

Standard packaging	31pcs/pallet
Module quantity per 20' container	155pcs
Module quantity per 40' container	527pcs(HQ)

Electrical Characteristics at STC

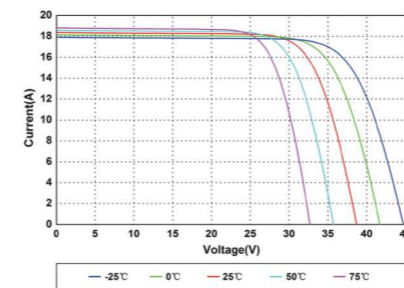
	580W	585W	590W	595W	600W	605W
Maximum Power (Pmax)	580W	585W	590W	595W	600W	605W
Open Circuit Voltage (Voc)	40.8V	41.0V	41.2V	41.4V	41.6V	41.8V
Short Circuit Current (Isc)	18.25A	18.30A	18.35A	18.40A	18.45A	18.50A
Voltage at Maximum Power (Vmp)	33.9V	34.1V	34.3V	34.5V	34.7V	34.9V
Current at Maximum Power (Imp)	17.11A	17.16A	17.21A	17.25A	17.30A	17.34A
Module Efficiency(%)	20.49	20.67	20.85	21.02	21.2	21.38
Operating Temperature	-40°C to +85°C					
Maximum System Voltage	1000V DC/1500V DC					
Fire Resistance Rating	Type 1(in accordance with UL1703)/Class C(IEC61730)					
Maximum Series Fuse Rating	30A					
STC Irradiance 1000W/m ² , Cell temperature 25°C, AM1.5; Tolerance of Pmax ±3%; Measurement Tolerance ±3%						

Electrical Characteristics at NOCT

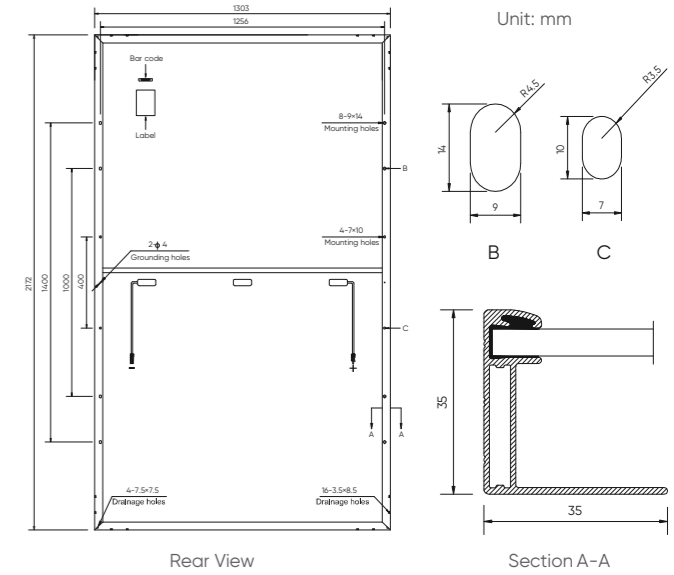
	580W	585W	590W	595W	600W	605W
Maximum Power (Pmax)	435W	439W	443W	447W	451W	455W
Open Circuit Voltage (Voc)	38.4V	38.6V	38.8V	39.0V	39.2V	39.4V
Short Circuit Current (Isc)	14.78A	14.82A	14.86A	14.90A	14.94A	14.98A
Voltage at Maximum Power (Vmp)	31.4V	31.6V	31.82V	32.0V	32.2V	32.4V
Current at Maximum Power (Imp)	13.86A	13.90A	13.94A	13.97A	14.01A	14.05A

NOCT: Irradiance 800W/m², Ambient temperature 20°C, Wind Speed 1m/s

IV Curves



Engineering Drawings



Specifications in this datasheet are subject to change without prior notice.

