



***SunMaster SLD12 Series
Street & Park Light***

Product Benefits

Superb Design

In combination of years experience in street and parking lot lighting, the SunMaster SLD12 Series Street & parking light was born. This new series is the result of a multi-disciplinary design study and it applies the latest technologies developed by SunMaster R&D. The product's reliability and performance are the priority factors to consider and they are verified and tested by SunMaster professional qualified and constantly updated personnel.

SUNMASTER follows the R&D step by step: from optical to mechanical and electronic design. And SUNMASTER monitors the development of LED technology constantly investing in it. The SLD12 series street light equipped with SUNMASTER's latest universal LED modules, delivering superb performance of LED Lighting and high reliability.

SUNMASTER universal LED module provides excellent flexibility of LED lights. It can switch between different models from SUNMASTER, such as high bay light, flood light, gas station light, etc. This saves the logistic and production cost for SUNMASTER and its customers.

Reliable LED lighting Technology

The special SUNMASTER Reliable LED Lighting Technology provides significant advantages in terms of luminous efficiency, minimising losses refraction and reflection inside the optical system. This system ensures a lower density of dirt and maintaining the luminaire performance for a very long period.

Protect the LED source

As the key to guarantee the total life span of the luminaire, the protection of the LED source is the core topic in the designing of SUNMASTER luminaire. We carefully select Mitsubishi PC cover.

The total IP66 of the whole product, and it also protects the LED chip from the external agents and impact.

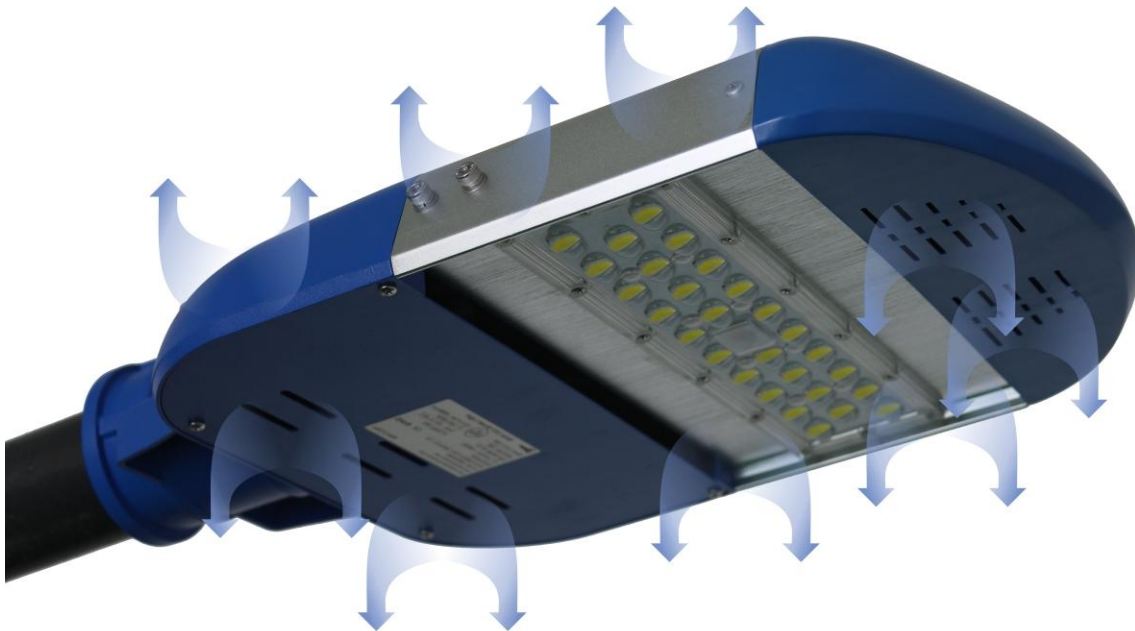


Product Benefits

Temperature Control

SUNMASTER SLD12 Street light is designed with superb heat radiation technique. The heat and air can go through the whole luminaire via the gaps between the modules. This product cleans ability. When the rain came, the fixture will be washed and the dirt automatically goes out.

By the excellent heat radiation ability, the temperature rising of SLD12 street light is only $<22^{\circ}\text{C}$. And the lamp can work in the environment from -30°C to 70°C . If the environment is 40°C , the maximize temperature on the lamp is 62°C . But the USA Bridgelux led chips can afford 110°C . This ensures the long life span and performance of the whole luminaire.

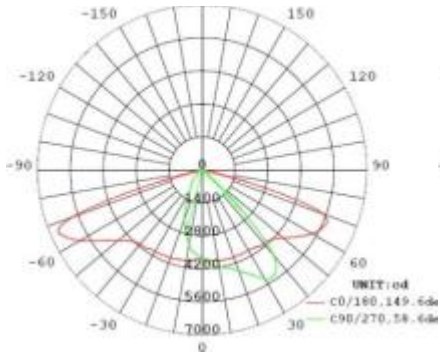


Product Benefits

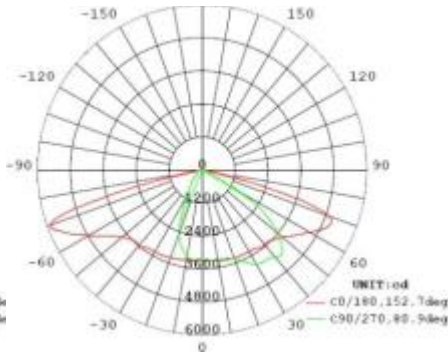
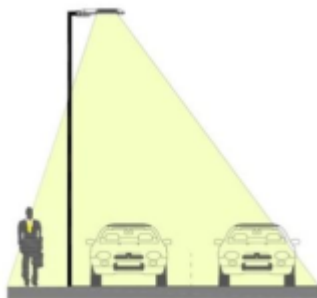
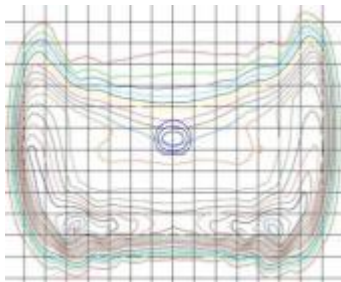
Multiple Light Distribution Options

Street light & parking light should be able to be used a widely range of applications. Such as highway, express way, road, avenue, walking path or parking lot. Thus, SUNMASTER provides different lens for the SLD12 Series Street light to achieve different light distributions.

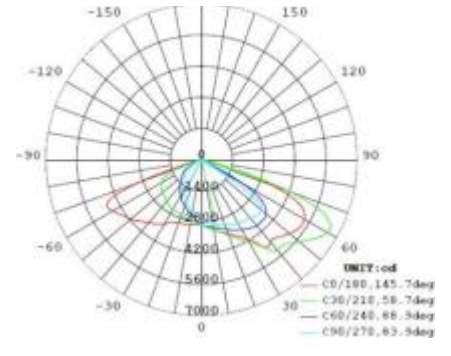
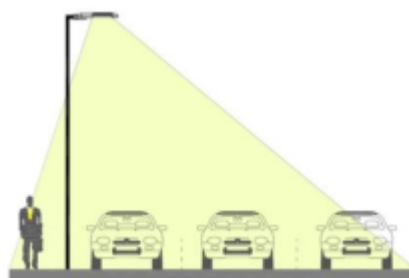
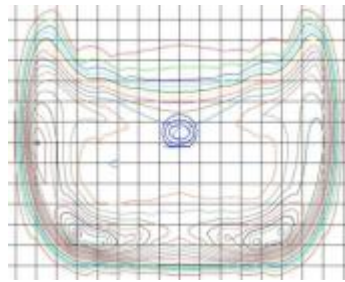
SUNMASTER follows the North American IESNA standard in providing the optional lens with Type II and Type III. The Type II lens is suitable for the highway with 2 lanes, Type III A is for 3 lanes and Type III B is for even wider road. SUNMASTER selects the most suitable lens for its customer according to the detailed parameters project by project.



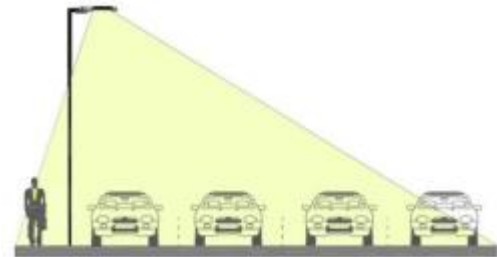
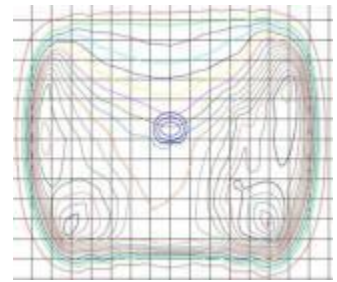
Type II: 60*150



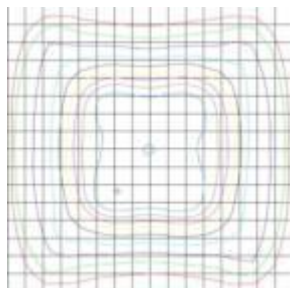
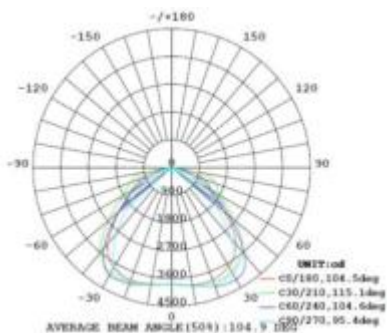
Type III A: 70*150



Type III B: 80*150 degrees

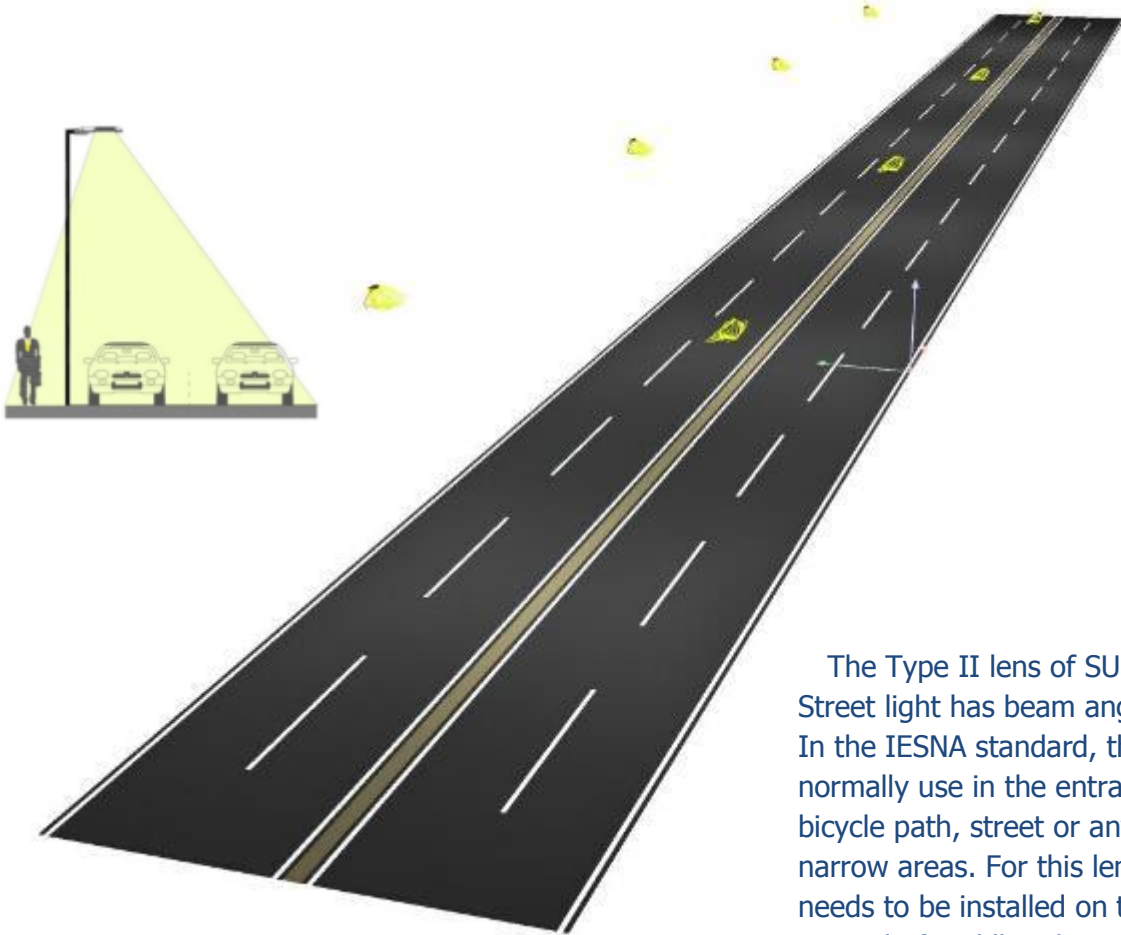


90-100 degree lens for parking lot

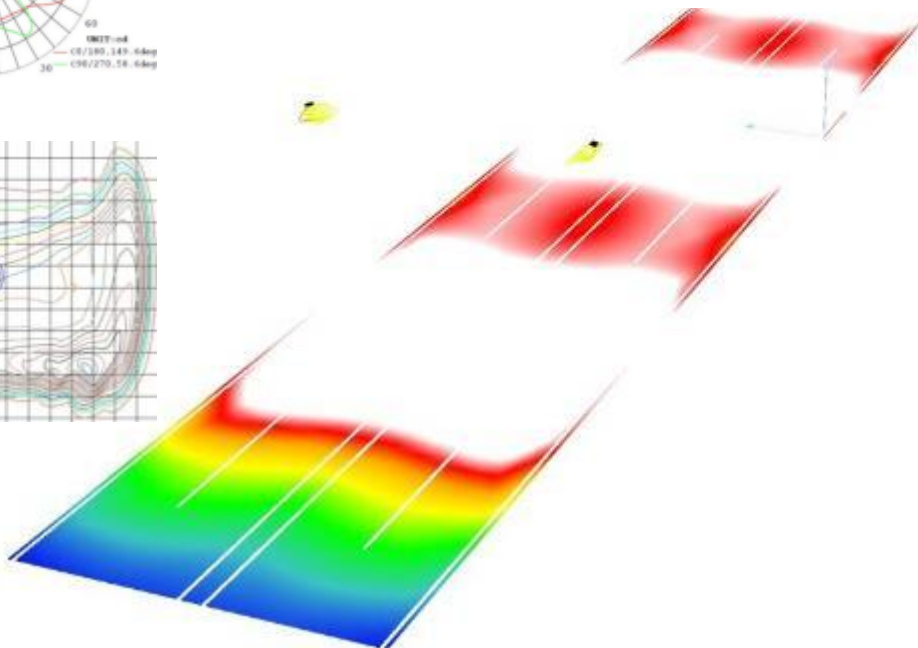
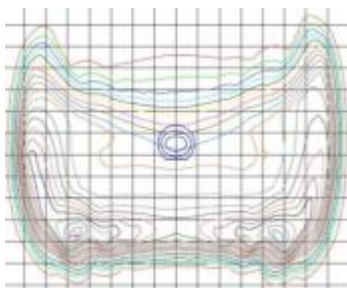
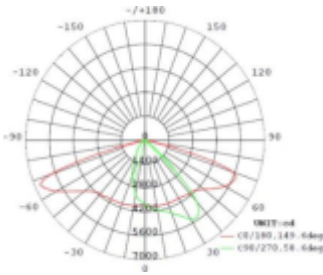


Product Benefits

Type II lens

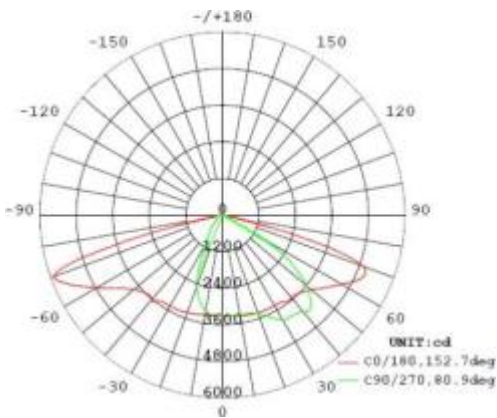
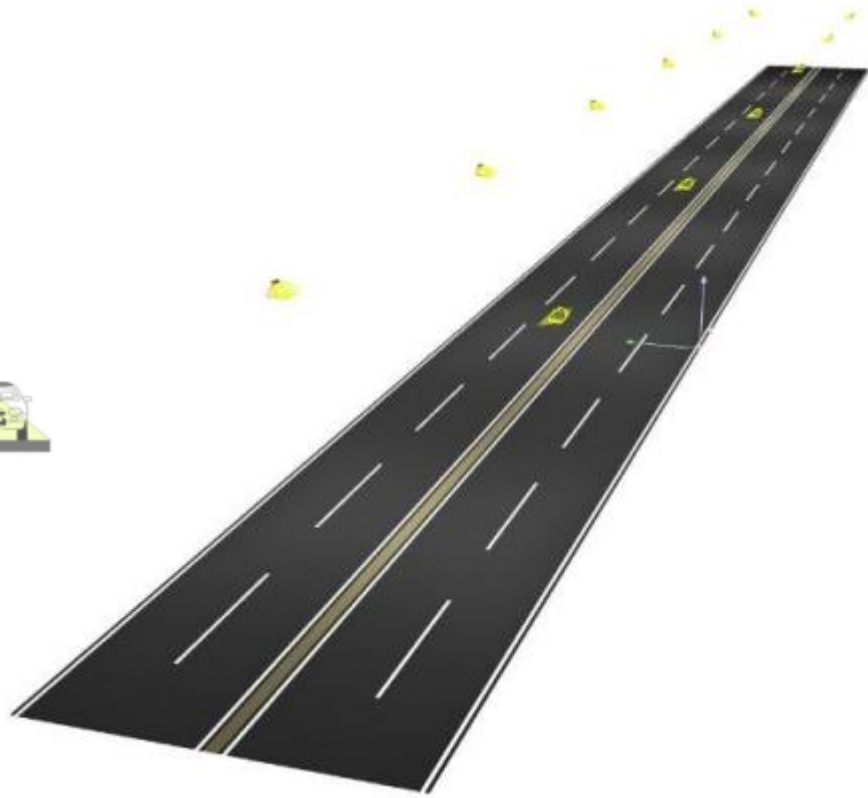
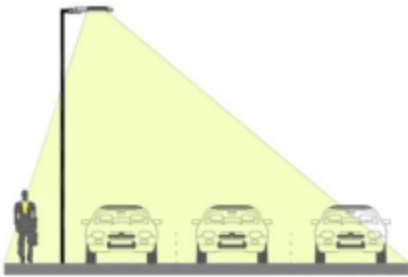


The Type II lens of SUNMASTER STL50 series Street light has beam angle of 60*150 degrees. In the IESNA standard, the Type II lens normally use in the entrance of wide sidewalk, bicycle path, street or any other long but narrow areas. For this lens, the street light needs to be installed on the side of the road instead of middle. The width of the light distribution is about 1.75 times than the installation height of the street light.

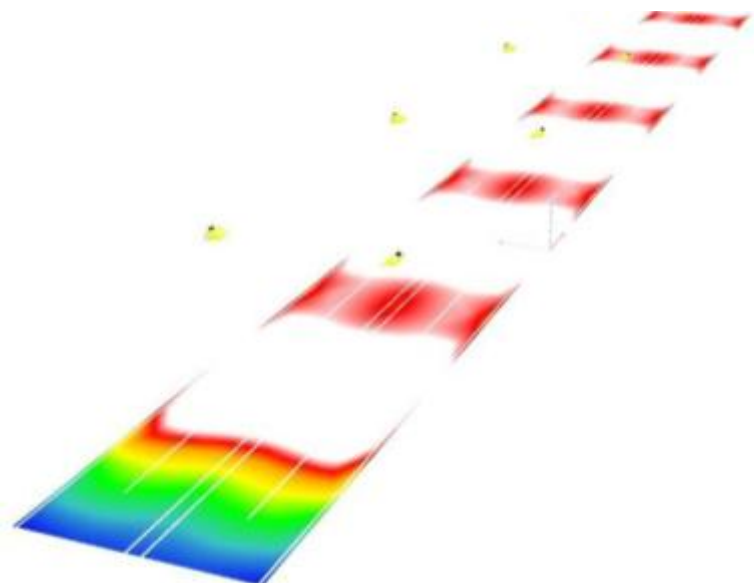
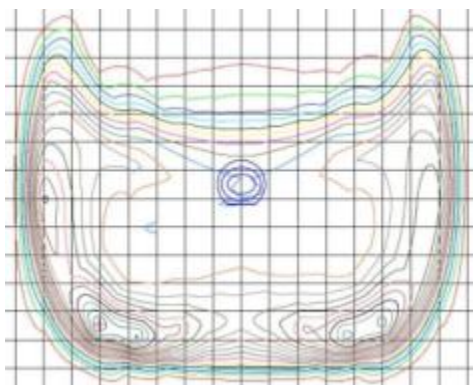


Product Benefits

Type III A lens

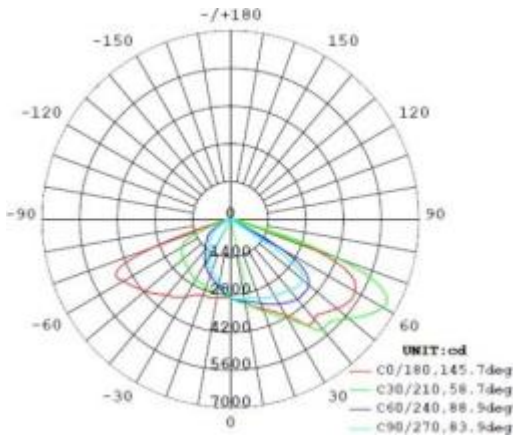
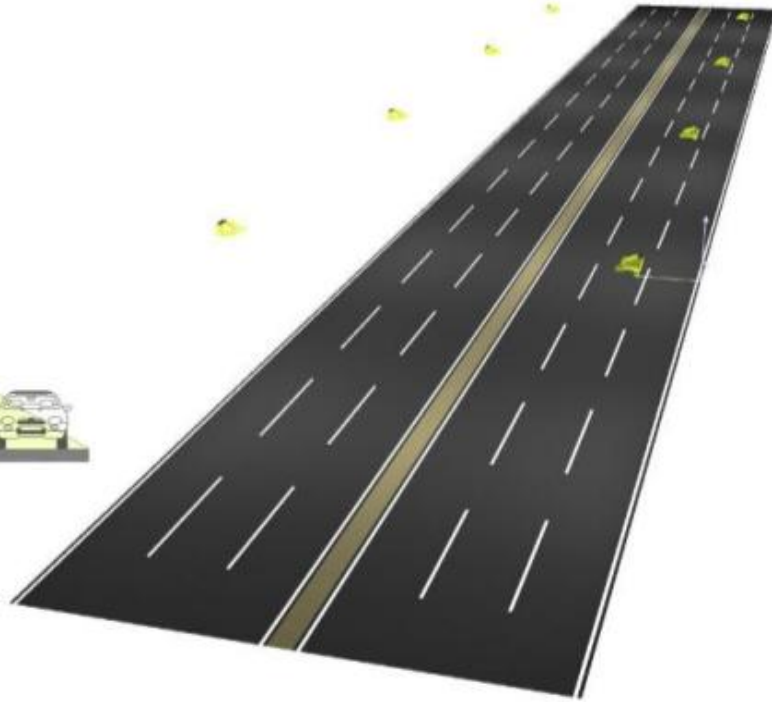
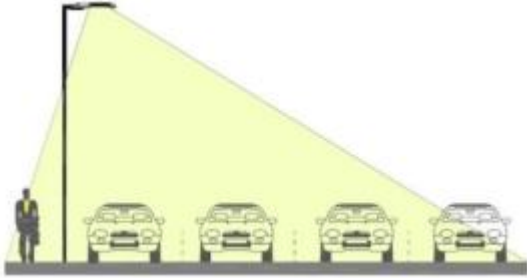


The Type III A lens of SUNMASTER STL50 series Street light has beam angle of 70*150 degrees. In the IESNA standard, the Type III lens normally used in the highway or expressway. The street light is also installed on the side of the road. And the light distribution is 2.75 times than the installation height of the street light. SUNMASTER designed 2 kinds of Type III lens: Type III A and Type III B. The Type III A is mainly for the street with 3 lanes.

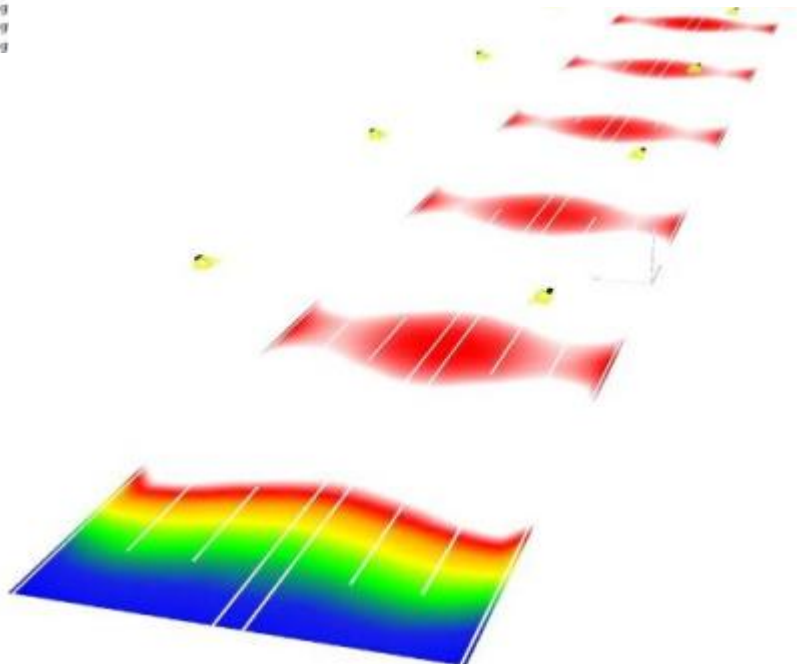
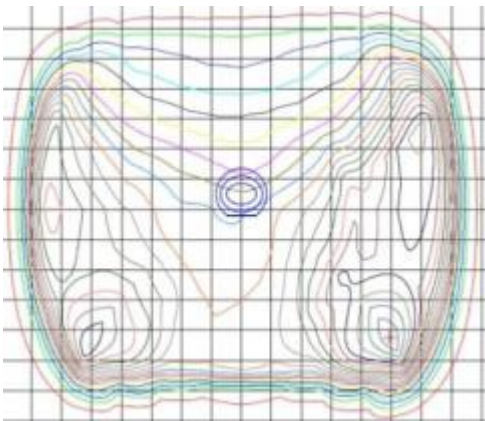


Product Benefits

Type III B lens

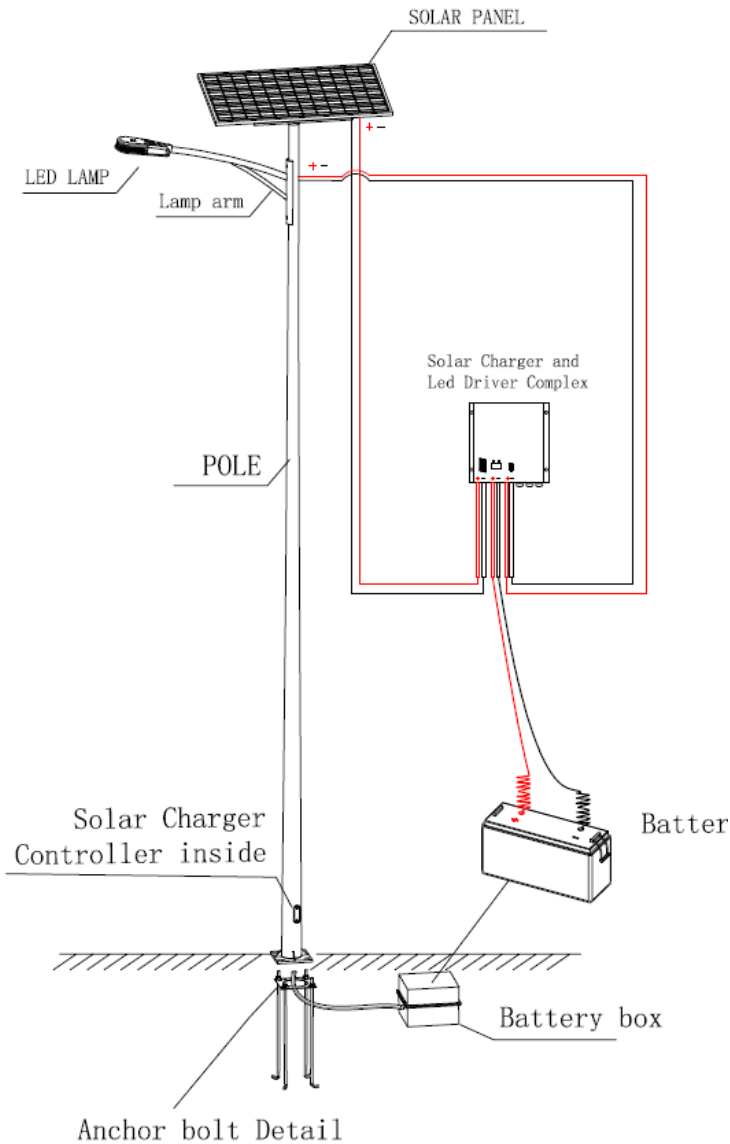


The Type III B lens of SUNMASTER SLD12 series Street light has beam angle of 80*150 degrees. In the IESNA standard, the Type III lens normally used in the highway or expressway. The street light is also installed on the side of the road. And the light distribution is 2.75 times than the installation height of the street light. The Type III B lens has even longer distributions on the vertical directions. The 80*150 beam angle makes it suitable for the street with 4 lanes.



Product Benefits

Solar Led street light system



SUNMASTER provides a comprehensive solution of solar Led street lighting system.

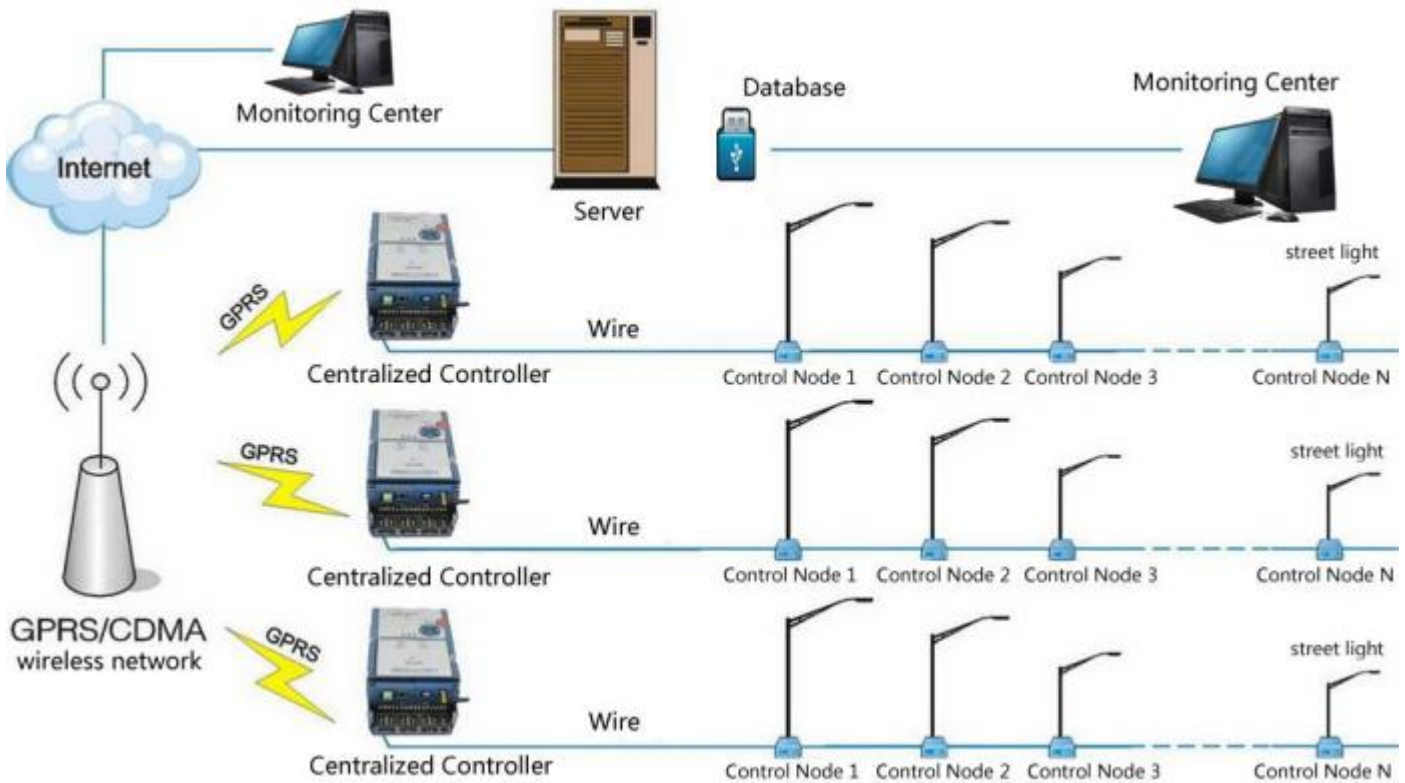
SUNMASTER SLD12 series Street light is suitable for this application.

A standard solar lighting system provided by SUNMASTER includes DC version led street light, solar panel, solar controller, gel battery, pole, battery box and accessories.

The system can be 12V/24VDC according to System required specification.

Product Benefits

Intelligence Street Lighting System (optional)



SUNMASTER provides a total solution for intelligence street lighting system, like DALI system or Zigbee system.

The whole system is driven by the GPRS or CDMA wireless network. For example, intelligence street lighting system of 3 roads will consist by a centralized controller on each road and the single light controller on each pole. Each single street light is a control node in the system. And the whole system is monitored and controlled by a general monitoring center with the specialized software.



Product Benefits

SUNMASTER SLD12-30W

LED Street & Parking Light,



Specifications

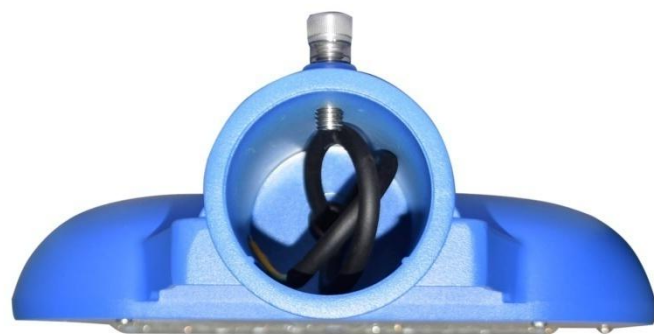
Model	SLD-30W
Wattage	30W
Voltage	12V DC
Current	2.5A
Power Factor(PF)	>0.95
Driver Efficiency	>90%

Photometric Specification

Luminous Flux	>5100lm
CRI	RA>70
CCT	3000k-7000k (optional)
Optional Beam Angle	45*150°, 65*150°, 70*150°

Mechanical Specifications

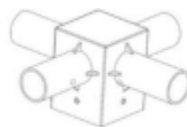
IP&IK Rating	IP66 & IK10
Lifetime	62000 hours - L70, @25°C
Heat Radiator	Anodized Aluminum
Lens	PC
Fixture Dimension	440*273*86mm
Carton Dimension	490*324*131mm
Net Weight	2.7kgs
Gross Weight	3.5kgs



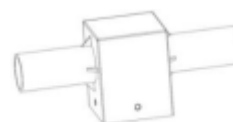
Optional converters for different applications



60mm to wall mount converter



4 in 1 converter



2 in 1 converter



Round to square converter



80 - 60mm converter



60 - 40mm converter



wall mount converter

Product Benefits

SUNMASTER SLD12-40W

LED Street & Parking Light,



Specifications

Model	SLD-40W
Wattage	40W
Voltage	12V DC
Current	3.3A
Power Factor(PF)	>0.95
Driver Efficiency	>90%

Photometric Specification

Luminous Flux	>6800lm
CRI	RA>70
CCT	3000k-7000k (optional)
Optional Beam Angle	45*150°, 65*150°, 70*150°

Mechanical Specifications

IP&IK Rating	IP66 & IK10
Lifetime	62000 hours - L70, @25°C
Heat Radiator	Anodized Aluminum
Lens	PC
Fixture Dimension	440*273*86mm
Carton Dimension	490*324*131mm
Net Weight	2.7kgs
Gross Weight	3.5kgs



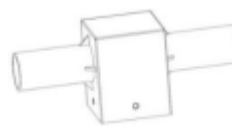
Optional converters for different applications



60mm to wall mount converter



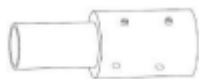
4 in 1 converter



2 in 1 converter



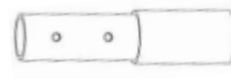
Round to square converter



80 - 60mm converter



60 - 40mm converter



wall mount converter

Product Benefits

SUNMASTER SLD12-50W

LED Street & Parking Light,



Specifications

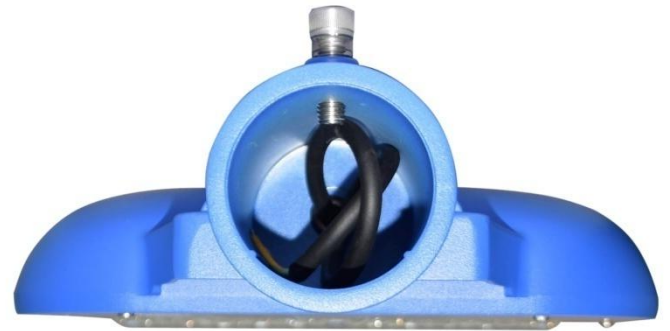
Model	SLD12-50W
Wattage	50W
Voltage	12V DC
Current	4.16A
Power Factor(PF)	>0.95
Driver Efficiency	>90%

Photometric Specification

Luminous Flux	>8500lm
CRI	RA>70
CCT	3000k-7000k (optional)
Optional Beam Angle	45*150°, 65*150°, 70*150°

Mechanical Specifications

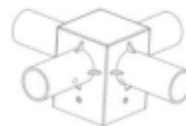
IP&IK Rating	IP66 & IK10
Lifetime	62000 hours - L70, @25°C
Heat Radiator	Anodized Aluminum
Lens	PC
Fixture Dimension	440*273*86mm
Carton Dimension	490*324*131mm
Net Weight	2.7kgs
Gross Weight	3.5kgs



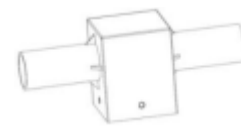
Optional converters for different applications



60mm to wall mount converter



4 in 1 converter



2 in 1 converter



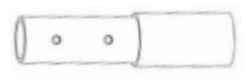
Round to square converter



80 - 60mm converter



60 - 40mm converter



wall mount converter

Product Benefits

SUNMASTER SLD12-60W

LED Street & Parking Light,



Specifications

Model	SLD12-60W
Wattage	60W
Voltage	24V DC
Current	2.5A
Power Factor(PF)	>0.95
Driver Efficiency	>90%

Photometric Specification

Luminous Flux	>10200lm
CRI	RA>70
CCT	3000k-7000k (optional)
Optional Beam Angle	45*150°, 65*150°, 70*150°

Mechanical Specifications

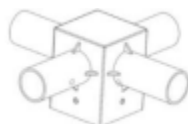
IP&IK Rating	IP66 & IK10
Lifetime	62000 hours - L70, @25°C
Heat Radiator	Anodized Aluminum
Lens	PC
Fixture Dimension	477*273*86mm
Carton Dimension	530*325*140mm
Net Weight	3.4kgs
Gross Weight	4.3kgs



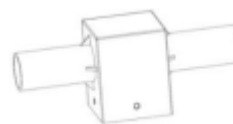
Optional converters for different applications



60mm to wall mount converter



4 in 1 converter



2 in 1 converter



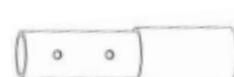
Round to square converter



80 - 60mm converter



60 - 40mm converter

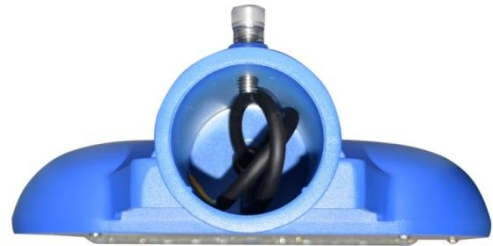


wall mount converter

Product Benefits

SUNMASTER SLD12-70W

LED Street & Parking Light,



Specifications

Model	SLD12-70W
Wattage	70W
Voltage	24V DC
Current	2.91A
Power Factor(PF)	>0.95
Driver Efficiency	>90%

Photometric Specification

Luminous Flux	>11900lm
CRI	RA>70
CCT	3000k-7000k (optional)
Optional Beam Angle	45*150°, 65*150°, 70*150°

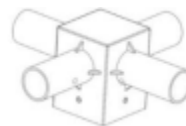
Mechanical Specifications

IP&IK Rating	IP66 & IK10
Lifetime	62000 hours - L70, @25°C
Heat Radiator	Anodized Aluminum
Lens	PC
Fixture Dimension	477*273*86mm
Carton Dimension	530*325*140mm
Net Weight	3.4kgs
Gross Weight	4.3kgs

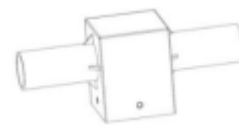
Optional converters for different applications



60mm to wall mount converter



4 in 1 converter



2 in 1 converter



Round to square converter



80 - 60mm converter



60 - 40mm converter



wall mount converter

Product Benefits

SUNMASTER SLD12-80W
LED Street & Parking Light,



Specifications

Model	SLD12-80W
Wattage	80W
Voltage	24V DC
Current	3.3A
Power Factor(PF)	>0.95
Driver Efficiency	>90%

Photometric Specification

Luminous Flux	>13600lm
CRI	RA>70
CCT	3000k-7000k (optional)
Optional Beam Angle	45*150°, 65*150°, 70*150°

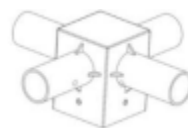
Mechanical Specifications

IP&IK Rating	IP66 & IK10
Lifetime	62000 hours - L70, @25°C
Heat Radiator	Anodized Aluminum
Lens	PC
Fixture Dimension	477*273*86mm
Carton Dimension	530*325*140mm
Net Weight	3.4kgs
Gross Weight	4.3kgs

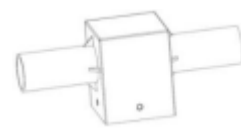
Optional converters for different applications



60mm to wall mount converter



4 in 1 converter



2 in 1 converter



Round to square converter



80 - 60mm converter



60 - 40mm converter

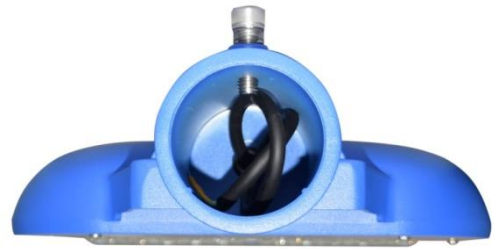
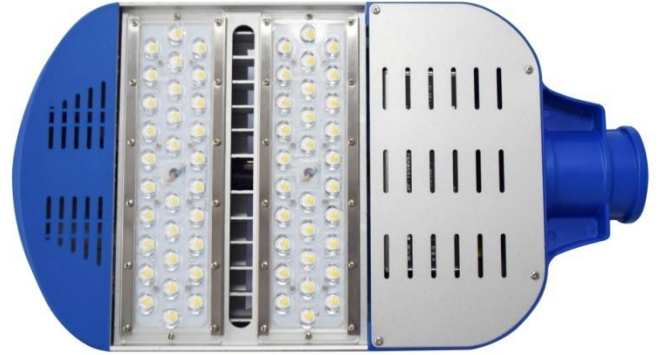


wall mount converter

Product Benefits

SUNMASTER SLD12-90W

LED Street & Parking Light,



Specifications

Model	SLD12-90W
Wattage	90W
Voltage	24V DC
Current	3.75A
Power Factor(PF)	>0.95
Driver Efficiency	>90%

Photometric Specification

Luminous Flux	>15300lm
CRI	RA>70
CCT	3000k-7000k (optional)
Optional Beam Angle	45*150°, 65*150°, 70*150°

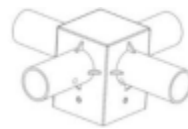
Mechanical Specifications

IP&IK Rating	IP66 & IK10
Lifetime	62000 hours - L70, @25°C
Heat Radiator	Anodized Aluminum
Lens	PC
Fixture Dimension	477*273*86mm
Carton Dimension	530*325*140mm
Net Weight	3.4kgs
Gross Weight	4.3kgs

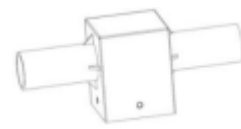
Optional converters for different applications



60mm to wall mount converter



4 in 1 converter



2 in 1 converter



Round to square converter



80 - 60mm converter



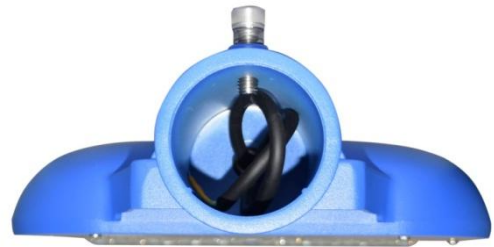
60 - 40mm converter



wall mount converter

Product Benefits

SUNMASTER SLD12-100W
LED Street & Parking Light,



Specifications

Model	SLD12-100W
Wattage	100W
Voltage	24V DC
Current	4.16A
Power Factor(PF)	>0.95
Driver Efficiency	>90%

Photometric Specification

Luminous Flux	>17000lm
CRI	RA>70
CCT	3000k-7000k (optional)
Optional Beam Angle	45*150°, 65*150°, 70*150°

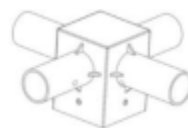
Mechanical Specifications

IP&IK Rating	IP66 & IK10
Lifetime	62000 hours - L70, @25°C
Heat Radiator	Anodized Aluminum
Lens	PC
Fixture Dimension	477*273*86mm
Carton Dimension	530*325*140mm
Net Weight	3.4kgs
Gross Weight	4.3kgs

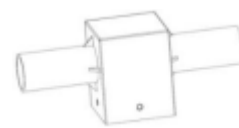
Optional converters for different applications



60mm to wall mount converter



4 in 1 converter



2 in 1 converter



Round to square converter



80 - 60mm converter



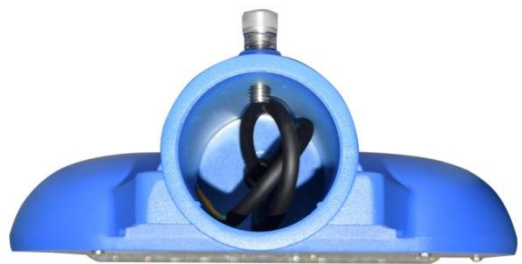
60 - 40mm converter



wall mount converter

Product Benefits

SUNMASTER SLD12-110W
LED Street & Parking Light,



Specifications

Model	SLD12-110W
Wattage	110W
Voltage	24V DC
Current	4.58A
Power Factor(PF)	>0.95
Driver Efficiency	>90%

Photometric Specification

Luminous Flux	>18700lm
CRI	RA>70
CCT	3000k-7000k (optional)
Optional Beam Angle	45*150°, 65*150°, 70*150°

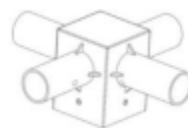
Mechanical Specifications

IP&IK Rating	IP66 & IK10
Lifetime	62000 hours - L70, @25°C
Heat Radiator	Anodized Aluminum
Lens	PC
Fixture Dimension	571*273*86mm
Carton Dimension	625*325*140mm
Net Weight	4.1kgs
Gross Weight	4.9kgs

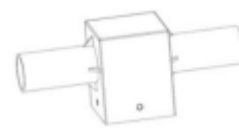
Optional converters for different applications



60mm to wall mount converter



4 in 1 converter



2 in 1 converter



Round to square converter



80 - 60mm converter



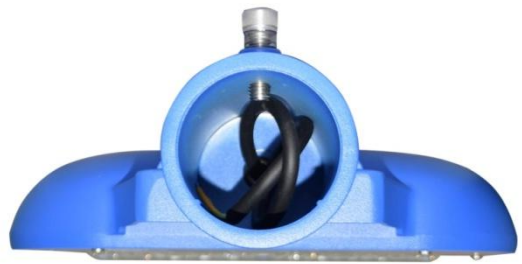
60 - 40mm converter



wall mount converter

Product Benefits

SUNMASTER SLD12-120W
LED Street & Parking Light,



Specifications

Model	SLD12-120W
Wattage	120W
Voltage	24V DC
Current	5A
Power Factor(PF)	>0.95
Driver Efficiency	>90%

Photometric Specification

Luminous Flux	>20400lm
CRI	RA>70
CCT	3000k-7000k (optional)
Optional Beam Angle	45*150°, 65*150°, 70*150°

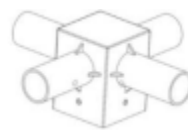
Mechanical Specifications

IP&IK Rating	IP66 & IK10
Lifetime	62000 hours - L70, @25°C
Heat Radiator	Anodized Aluminum
Lens	PC
Fixture Dimension	571*273*86mm
Carton Dimension	625*325*140mm
Net Weight	4.1kgs
Gross Weight	4.9kgs

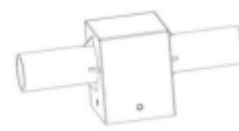
Optional converters for different applications



60mm to wall mount converter



4 in 1 converter



2 in 1 converter



Round to square converter



80 - 60mm converter



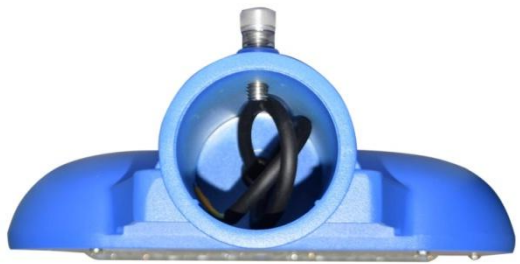
60 - 40mm converter



wall mount converter

Product Benefits

SUNMASTER SLD12-130W
LED Street & Parking Light,



Specifications

Model	SLD12-130W
Wattage	130W
Voltage	24V DC
Current	5.41A
Power Factor(PF)	>0.95
Driver Efficiency	>90%

Photometric Specification

Luminous Flux	>22100lm
CRI	RA>70
CCT	3000k-7000k (optional)
Optional Beam Angle	45*150°, 65*150°, 70*150°

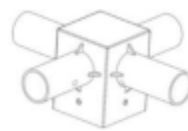
Mechanical Specifications

IP&IK Rating	IP66 & IK10
Lifetime	62000 hours - L70, @25°C
Heat Radiator	Anodized Aluminum
Lens	PC
Fixture Dimension	571*273*86mm
Carton Dimension	625*325*140mm
Net Weight	4.1kgs
Gross Weight	4.9kgs

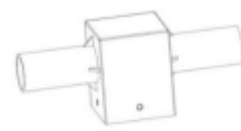
Optional converters for different applications



60mm to wall mount converter



4 in 1 converter



2 in 1 converter



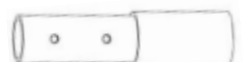
Round to square converter



80 - 60mm converter



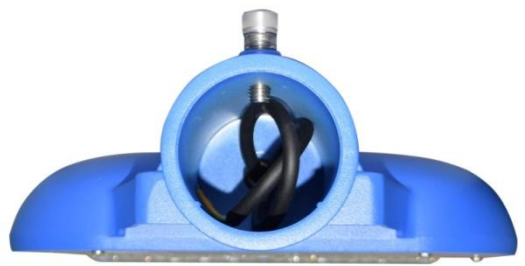
60 - 40mm converter



wall mount converter

Product Benefits

SUNMASTER SLD12-140W
LED Street & Parking Light,



Specifications

Model	SLD12-140W
Wattage	140W
Voltage	24V DC
Current	5.83A
Power Factor(PF)	>0.95
Driver Efficiency	>90%

Photometric Specification

Luminous Flux	>23800lm
CRI	RA>70
CCT	3000k-7000k (optional)
Optional Beam Angle	45*150°, 65*150°, 70*150°

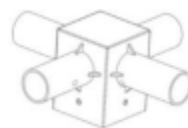
Mechanical Specifications

IP&IK Rating	IP66 & IK10
Lifetime	62000 hours - L70, @25°C
Heat Radiator	Anodized Aluminum
Lens	PC
Fixture Dimension	571*273*86mm
Carton Dimension	625*325*140mm
Net Weight	4.1kgs
Gross Weight	4.9kgs

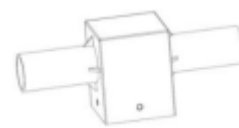
Optional converters for different applications



60mm to wall mount converter



4 in 1 converter



2 in 1 converter



Round to square converter



80 - 60mm converter



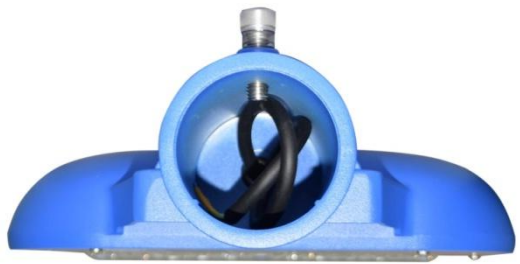
60 - 40mm converter



wall mount converter

Product Benefits

SUNMASTER SLD12-150W
LED Street & Parking Light,



Specifications

Model	SLD12-150W
Wattage	150W
Voltage	24V DC
Current	6.25A
Power Factor(PF)	>0.95
Driver Efficiency	>90%

Photometric Specification

Luminous Flux	>25500lm
CRI	RA>70
CCT	3000k-7000k (optional)
Optional Beam Angle	45*150°, 65*150°, 70*150°

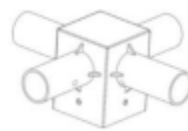
Mechanical Specifications

IP&IK Rating	IP66 & IK10
Lifetime	62000 hours - L70, @25°C
Heat Radiator	Anodized Aluminum
Lens	PC
Fixture Dimension	571*273*86mm
Carton Dimension	625*325*140mm
Net Weight	4.1kgs
Gross Weight	4.9kgs

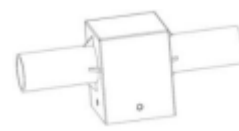
Optional converters for different applications



60mm to wall mount converter



4 in 1 converter



2 in 1 converter



Round to square converter



80 - 60mm converter



60 - 40mm converter

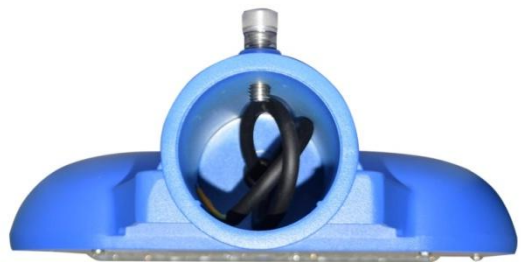


wall mount converter

Product Benefits

SUNMASTER SLD12-160W

LED Street & Parking Light,



Specifications

Model	SLD12-160W
Wattage	160W
Voltage	24V DC
Current	6.6A
Power Factor(PF)	>0.95
Driver Efficiency	>90%

Photometric Specification

Luminous Flux	>27200lm
CRI	RA>70
CCT	3000k-7000k (optional)
Optional Beam Angle	45*150°, 65*150°, 70*150°

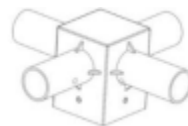
Mechanical Specifications

IP&IK Rating	IP66 & IK10
Lifetime	62000 hours - L70, @25°C
Heat Radiator	Anodized Aluminum
Lens	PC
Fixture Dimension	665*273*86mm
Carton Dimension	720*325*140mm
Net Weight	4.8kgs
Gross Weight	6.1kgs

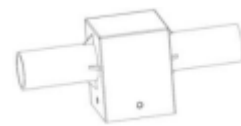
Optional converters for different applications



60mm to wall mount converter



4 in 1 converter



2 in 1 converter



Round to square converter



80 - 60mm converter



60 - 40mm converter

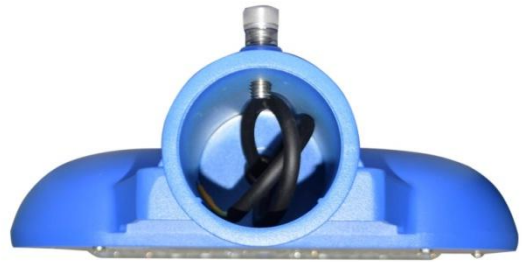


wall mount converter

Product Benefits

SUNMASTER SLD12-170W

LED Street & Parking Light,



Specifications

Model	SLD12-170W
Wattage	170W
Voltage	24V DC
Current	7.08A
Power Factor(PF)	>0.95
Driver Efficiency	>90%

Photometric Specification

Luminous Flux	>28900lm
CRI	RA>70
CCT	3000k-7000k (optional)
Optional Beam Angle	45*150°, 65*150°, 70*150°

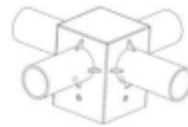
Mechanical Specifications

IP&IK Rating	IP66 & IK10
Lifetime	62000 hours - L70, @25°C
Heat Radiator	Anodized Aluminum
Lens	PC
Fixture Dimension	665*273*86mm
Carton Dimension	720*325*140mm
Net Weight	4.8kgs
Gross Weight	6.1kgs

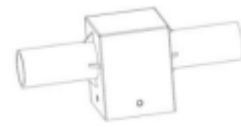
Optional converters for different applications



60mm to wall mount converter



4 in 1 converter



2 in 1 converter



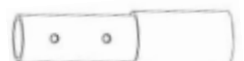
Round to square converter



80 - 60mm converter



60 - 40mm converter

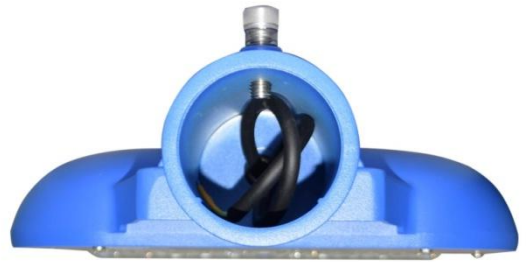


wall mount converter

Product Benefits

SUNMASTER SLD12-180W

LED Street & Parking Light,



Specifications

Model	SLD12-180W
Wattage	180W
Voltage	24V DC
Current	7.5A
Power Factor(PF)	>0.95
Driver Efficiency	>90%

Photometric Specification

Luminous Flux	>30600lm
CRI	RA>70
CCT	3000k-7000k (optional)
Optional Beam Angle	45*150°, 65*150°, 70*150°

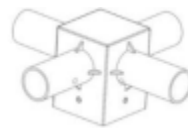
Mechanical Specifications

IP&IK Rating	IP66 & IK10
Lifetime	62000 hours - L70, @25°C
Heat Radiator	Anodized Aluminum
Lens	PC
Fixture Dimension	665*273*86mm
Carton Dimension	720*325*140mm
Net Weight	4.8kgs
Gross Weight	6.1kgs

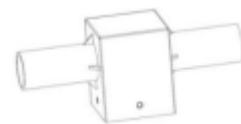
Optional converters for different applications



60mm to wall mount converter



4 in 1 converter



2 in 1 converter



Round to square converter



80 - 60mm converter



60 - 40mm converter

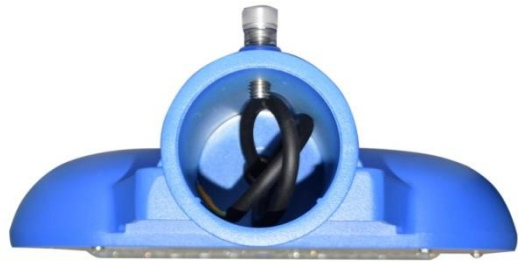


wall mount converter

Product Benefits

SUNMASTER SLD12-190W

LED Street & Parking Light,



Specifications

Model	SLD12-190W
Wattage	190W
Voltage	24V DC
Current	7.91A
Power Factor(PF)	>0.95
Driver Efficiency	>90%

Photometric Specification

Luminous Flux	>32300lm
CRI	RA>70
CCT	3000k-7000k (optional)
Optional Beam Angle	45*150°, 65*150°, 70*150°

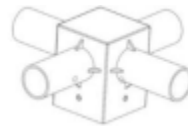
Mechanical Specifications

IP&IK Rating	IP66 & IK10
Lifetime	62000 hours - L70, @25°C
Heat Radiator	Anodized Aluminum
Lens	PC
Fixture Dimension	665*273*86mm
Carton Dimension	720*325*140mm
Net Weight	4.8kgs
Gross Weight	6.1kgs

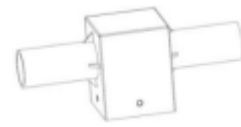
Optional converters for different applications



60mm to wall mount converter



4 in 1 converter



2 in 1 converter



Round to square converter



80 - 60mm converter



60 - 40mm converter

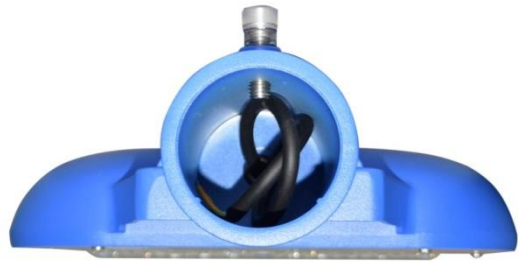


wall mount converter

Product Benefits

SUNMASTER SLD12-200W

LED Street & Parking Light,



Specifications

Model	SLD12-200W
Wattage	200W
Voltage	24V DC
Current	8.33A
Power Factor(PF)	>0.95
Driver Efficiency	>90%

Photometric Specification

Luminous Flux	>34000lm
CRI	RA>70
CCT	3000k-7000k (optional)
Optional Beam Angle	45*150°, 65*150°, 70*150°

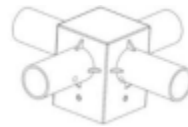
Mechanical Specifications

IP&IK Rating	IP66 & IK10
Lifetime	62000 hours - L70, @25°C
Heat Radiator	Anodized Aluminum
Lens	PC
Fixture Dimension	665*273*86mm
Carton Dimension	720*325*140mm
Net Weight	4.8kgs
Gross Weight	6.1kgs

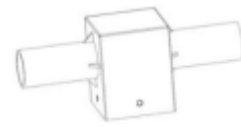
Optional converters for different applications



60mm to wall mount converter



4 in 1 converter



2 in 1 converter



Round to square converter



80 - 60mm converter



60 - 40mm converter



wall mount converter