

More
+ Power
Less Expense

SunMaster Solar Co., Ltd
Add: No. 2819, Haitang East Road, Jinhua Zhejiang China
Europe Branch:
Via AngeloMoro 61, San Donato Milanese, Italy

Mob: +86 139 6796 1680
Whats APP: +86 139 6796 1680

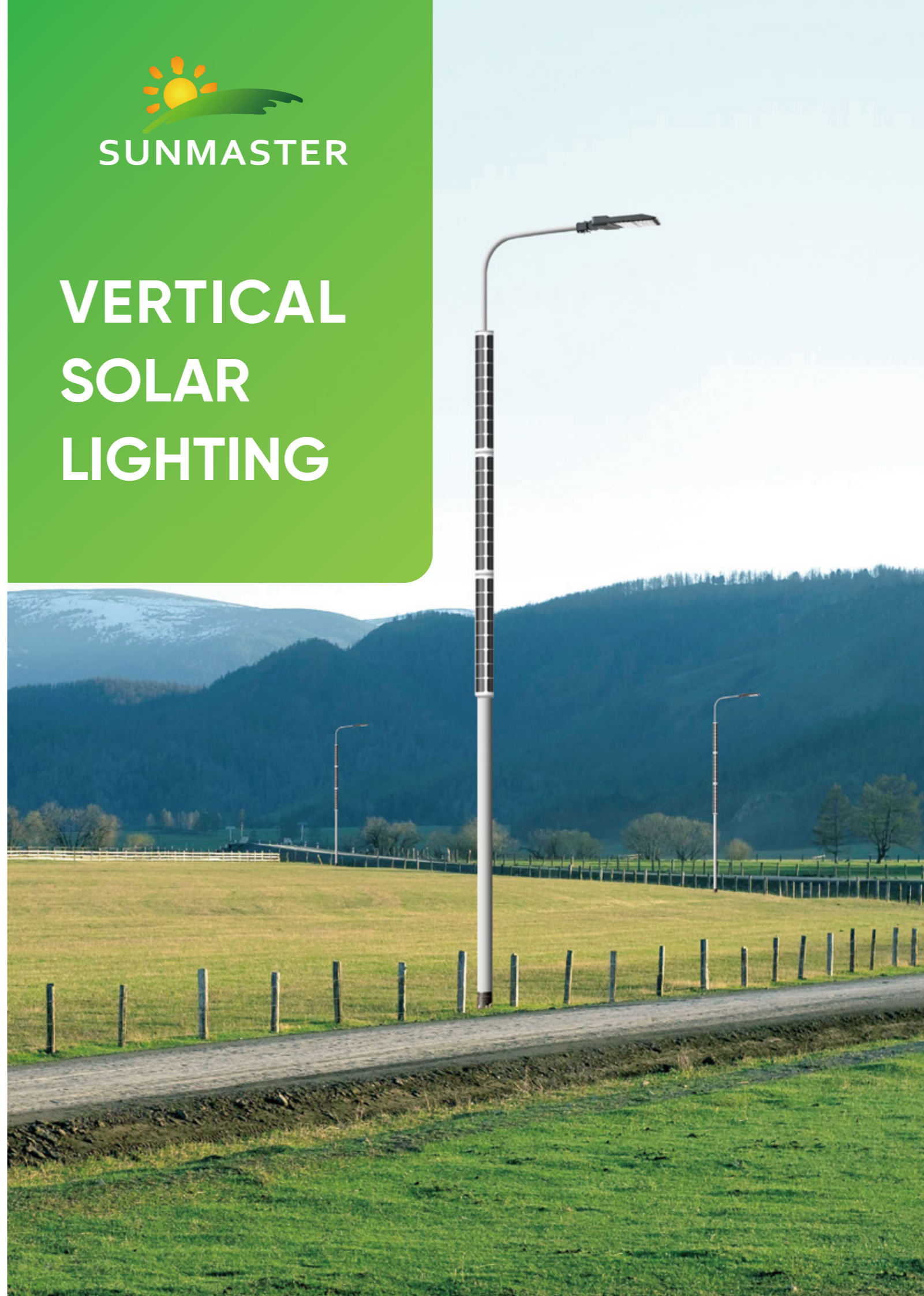
Web: www.chinasunmaster.com
Mail: info@chinasunmaster.com

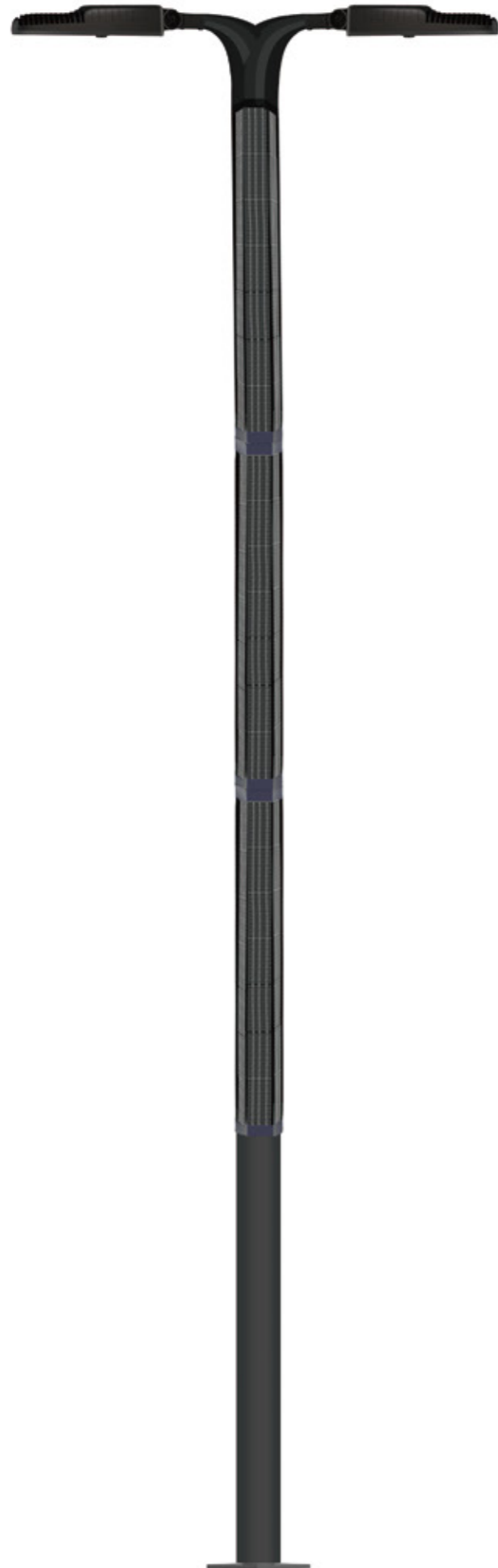
Mob: +39 348 350 4129

Mail: export@chinasunmaster.com



VERTICAL SOLAR LIGHTING





OUR FACTORY

SMARTER MANUFACTURING SMARTER CHOICE

SunMaster Solar posites itself as a leader in the solar industry not only in leading-edge product performance, but also in manufacturing equipment, quality control, and customer service. SunMaster Solar strives to meet all clients' expectations by utilizing fully automated manufacturing facilities, advanced quality control system, and self-developed fully transparent quality management system.



New Product

Octagonal/Hexagona solar Integrated Pole

Octagonal/Hexagona solar pole from SunMaster are our most advanced and innovative solar modules for various pole mounted PV applications. SunMaster's Octagonal/Hexagona solar pole, manufactured to high quality standards, can meet decorative and high-end application - especially for area and garden lighting without compromising aesthetics.

Model No.	SMHS-30W	SMHS-50W	SMHS-100W
LED light	30W	50W	100W
Efficiency	180lm/w	180lm/w	180lm/w
Total lumens	5400lm	9000lm	18000lm
Solar panel	160W	240W	600W
Lithium battery	615Wh	1024Wh	2048Wh
Solar controller	MPPT 10A	MPPT 10A	MPPT 15A
Pole material	Steel/Aluminum	Steel/Aluminum	Steel/Aluminum
Pole height	5M	8M	10M
Working time	12-14 hrs/day including energy saving mode, 3 days backup		
Certificate	CE,RoHS,IEC61215,IEC61730,IEC60598,IP65,IK10		



Effective Square solar Integrated Pole

The SunMaster square pole solar street light is perfectly integrated with lithium iron phosphate battery, vertically installed mono solar panel and MPPT charger. It adopts extruded aluminum structure, which is durable and has a long service life. The charger and battery are installed in the lamp column and can be accessed through the maintenance window for easy maintenance. Four sides verticalThe installed solar panel can capture the sunlight all day. The protection level of the battery is up to IP-68, which can effectively prevent water immersion Damage.

Model No.	SMSS-30W	SMSS-50W	SMSS-100W
LED light	30W	50W	100W
Efficiency	180lm/w	180lm/w	180lm/w
Total lumens	5400lm	9000lm	18000lm
Solar panel	160W	240W	400W
Lithium battery	615Wh	1024Wh	2048Wh
Solar controller	MPPT 10A	MPPT 10A	MPPT 15A
Pole material	Steel/Aluminum	Steel/Aluminum	Steel/Aluminum
Pole height	5M	8M	10M
Working time	12-14 hrs/day including energy saving mode, 3 days backup		
Certificate	CE, RoHS, IEC61215, IEC61730, IEC60598, IP65, IK10		



Cylindrical pole

Solar Wrapped Integrated Pole Lighting

The most versatile solar light post

The SunMaster solar light post is the most cost-efficient and environmentally friendly solution in areas where no power grid or other lighting infrastructure is present, or where replacement is due. With an efficiency of over 25%, the SunMaster's solar panels are the most efficient on the market. Sunlight always reaches the photovoltaic cells at an optimum angle due to the solar panels' cylindrical shape.

All generated energy is stored in a high capacity lithium battery. Even in case of cloudy weather or during a complete absence of sunshine, the lithium battery can power the solar light post up to several weeks on end. Advanced wireless communication hardware combined with an online monitoring platform enables full remote management.

The SunMaster solar light post is more than just a solar-powered street light. Its sleek design fits perfectly in modern urban areas and green environments where sustainability and energy savings are valuable. But the solar light post is also made to withstand the roughest conditions in areas where no (reliable) electricity grid is available.

Model No.	SMWS-30W	SMWS-50W	SMWS-100W
LED light	30W	50W	100W
Efficiency	180lm/w	180lm/w	180lm/w
Total lumens	5400lm	9000lm	18000lm
Solar panel	140W	280W	560W
Lithium battery	615Wh	1024Wh	2048Wh
Solar controller	MPPT 10A	MPPT 10A	MPPT 15A
Pole material	Steel/Aluminum	Steel/Aluminum	Steel/Aluminum
Pole height	5M	8M	10M
Working time	12-14 hrs/day including energy saving mode, 3 days backup		
Certificate	CE, RoHS, IEC61215, IEC61730, IEC60598, IP65, IK10		

SunMaster Connect

Solar-powered connectivity

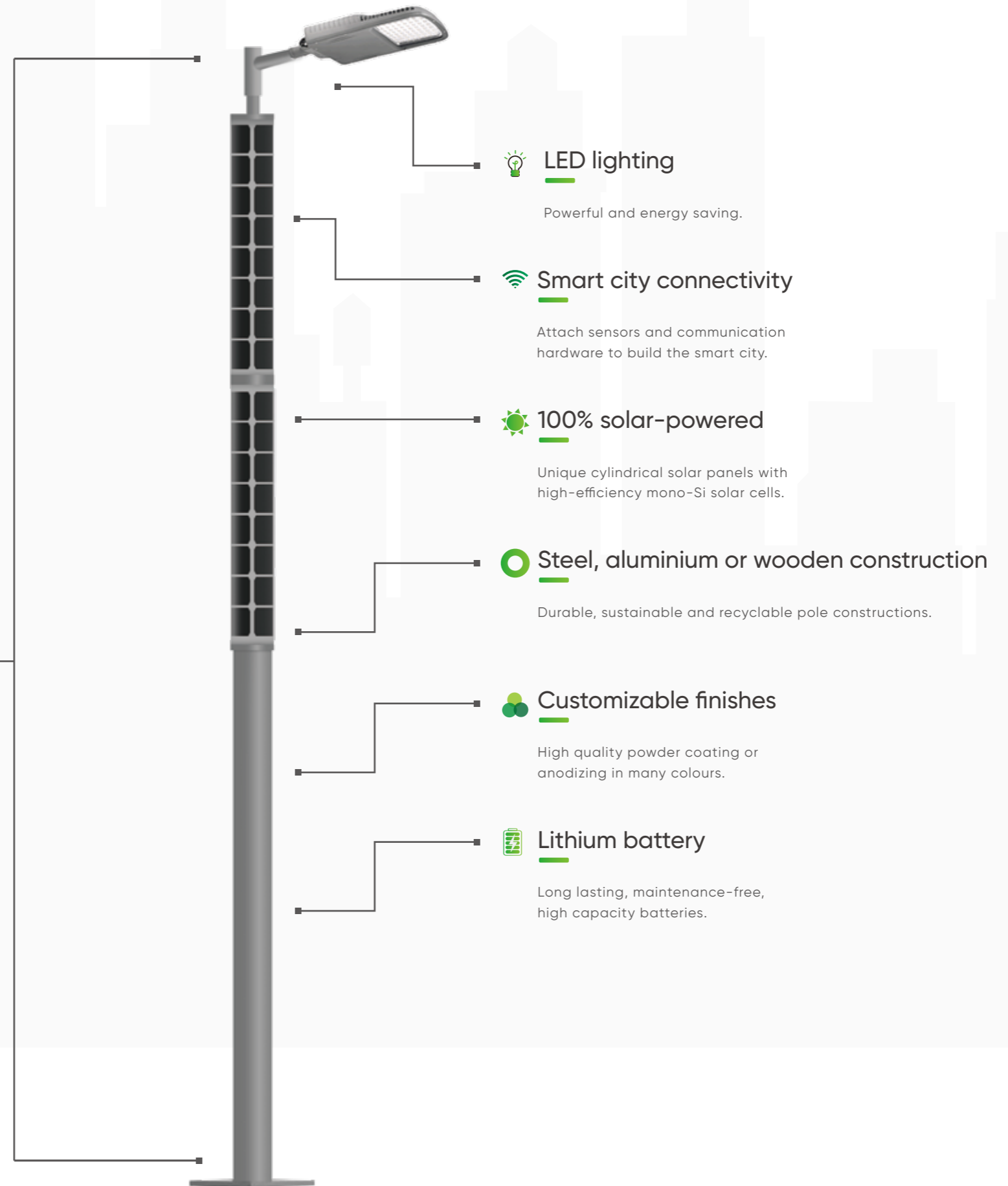
The SunMaster Connect makes wireless networking truly wireless. Use the SunMaster Connect to power your WiFi network or PoE device. Due to SunMaster's advanced solar technology, your appliance or network is 100% powered by sustainable solar energy. This means there is no need for expensive cabling and invasive trenching. It is therefore the ideal power solution for providers of WiFi hotspots at places where no grid connection is available, such as campsites, parks, smart cities, rural areas and more. Or use the SunMaster Connect to power your off-grid power over ethernet PoE device.

The possibilities are endless. The sophisticated solar technology results in quick installation, easy operation and a low total cost of ownership. SunMaster Connect is designed for durability with the toughest conditions in mind, and has proven its outstanding quality at numerous locations worldwide. SunMaster technology is used from the USA to the Middle East and from Germany to the Netherlands. The curved vertical integrated solar panels do not only look very sleek, but also wind-resistant and self-cleaning. Dirt and dust can not stick on the design. Solar energy generated during the day is stored in high-quality lithium batteries, which are long lasting and require minimum maintenance. All SunMaster poles can be remotely monitored, which reduces maintenance costs and makes the pole extremely reliable.

Get the SunMaster Connect for your WiFi network or off-grid device. SunMaster Connect is evaluable in multiple models, and can be configured to your project best.

Height

Pole length: 4-12 meter
1-4 Solar modules
1-2 Luminaires



SMLN-1

CHARACTERISTICS

- Automatic night/day on/off & economy late night dimming
- Autonomy in nominal mode 30 hours (2.5 nights)
- Autonomy in Late night dimming mode 45 hours (3.8 nights);
- Factory preset: 50 % illuminance decreasing after 4 hours till 1 h before dawn;
- User specified: illuminance decreasing
 - dimming start 1-100 %;
 - dimming stop 2-8 hours;
 - 0.5 - 3 h before dawn.
- Remote control available
- Operating temperature from -35° up to +65°C
- Maximum air humidity 95 %

LIGHT SOURCE

LED Power	30W/50W/100W
Led driver Power Efficiency	97 %
Led bulb	SMD3030/SMD5050
LED Light Output	180 lm/W
Current Efficiency	92 %
LED Luminous Flux	5400 lm/9000 lm/18000 lm
Junction Temperature at Ta = 25°C	65°C
Thermal Efficiency	92 %
Color Rendering Index (CRI)	70-85
Lifespan L80	100000 h

BATTERY

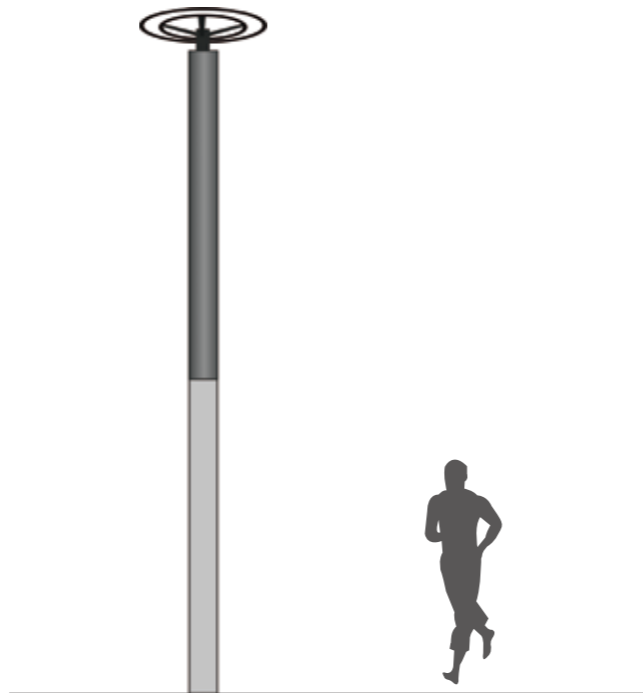
Type	Sealed maintenance free, Flame retardant, Lithium cell
Capacity	42Ah 12.8V/36Ah 25.6V/72Ah 25.6V
Nominal voltage	12.8V/25.6V
Charging	built in intelligent charge controller (BMS & MPPT)
Lifespan	10 years (3650 charging cycles)

SOLAR MODULE

Type	Monocrystalline
Peak power	120W/200W/400W
Lifespan	25 years

PARAMETERS OF THE MECHANICAL CONSTRUCTION

Realization	Aluminum cast alloy + Polycarbonate UV stabilized
Height	3M/5M/8M
Square dimension	200x200 mm
Flange dimension	350x350 mm



Quality Assurance ISO 9001:2018
Certificate:CE,RoHS,IEC61215,IEC61730

SMLN-2

CHARACTERISTICS

- Automatic night/day on/off & economy late night dimming
- Autonomy in nominal mode 30 hours (2.5 nights)
- Autonomy in Late night dimming mode 45 hours (3.8 nights);
- Factory preset: 50 % illuminance decreasing after 4 hours till 1 h before dawn;
- User specified: illuminance decreasing
 - dimming start 1-100 %;
 - dimming stop 2-8 hours;
 - 0.5 - 3 h before dawn.
- Remote control available
- Operating temperature from -35° up to +65°C
- Maximum air humidity 95 %

LIGHT SOURCE

LED Power	30W/50W/100W
Led driver Power Efficiency	97 %
Led bulb	SMD3030/SMD5050
LED Light Output	180 lm/W
Current Efficiency	92 %
LED Luminous Flux	5400 lm/9000 lm/18000 lm
Junction Temperature at Ta = 25°C	65°C
Thermal Efficiency	92 %
Color Rendering Index (CRI)	70-85
Lifespan L80	100000 h

BATTERY

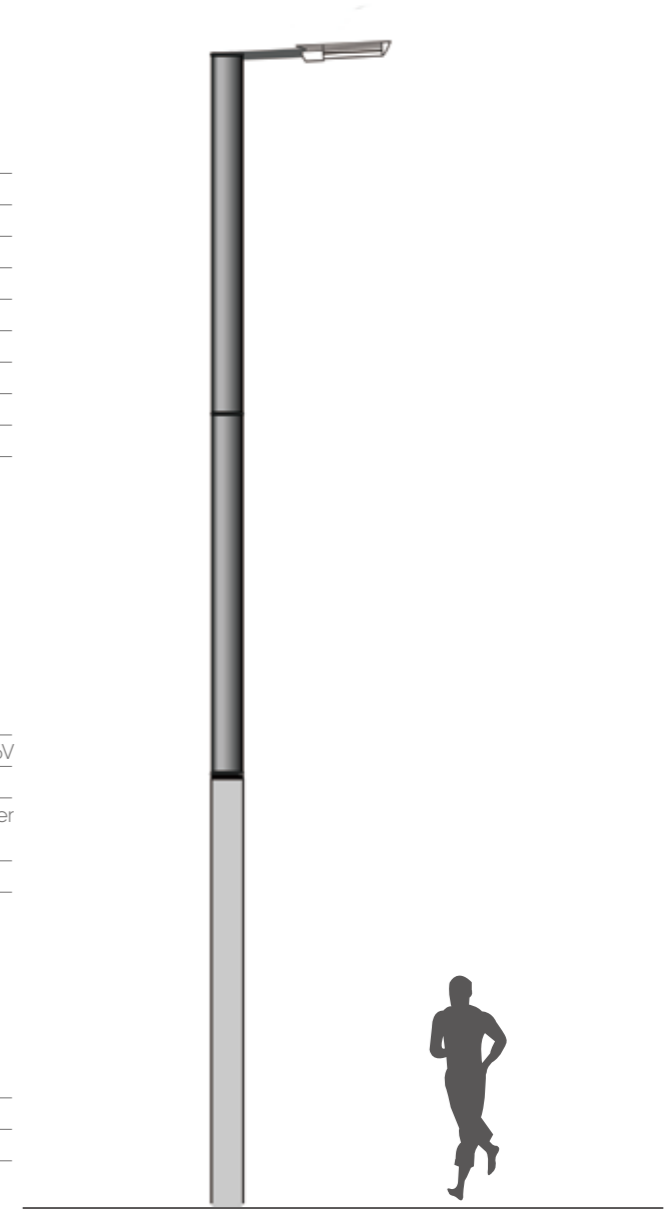
Type	Sealed maintenance free, Flame retardant, Lithium cell
Capacity	42Ah 12.8V/36Ah 25.6V/72Ah 25.6V
Nominal voltage	12.8V/25.6V
Charging	built in intelligent charge controller (BMS & MPPT)
Lifespan	10 years (3650 charging cycles)

SOLAR MODULE

Type	Monocrystalline
Peak power	120W/200W/400W
Lifespan	25 years

PARAMETERS OF THE MECHANICAL CONSTRUCTION

Realization	Aluminum cast alloy + Polycarbonate UV stabilized
Height	3M/5M/8M
Square dimension	200x200 mm
Flange dimension	350x350 mm



Quality Assurance ISO 9001:2018
Certificate:CE,RoHS,IEC61215,IEC61730

SMLN-3

CHARACTERISTICS

- Automatic night/day on/off & economy late night dimming
- Autonomy in nominal mode 30 hours (2.5 nights)
- Autonomy in Late night dimming mode 45 hours (3.8 nights);
- Factory preset: 50 % illuminance decreasing after 4 hours till 1 h before dawn;
- User specified: illuminance decreasing 1-100 %;
 - dimming start 2-8 hours;
 - dimming stop 0.5 - 3 h before dawn.
- Remote control available
- Operating temperature from -35° up to +65°C
- Maximum air humidity 95 %

LIGHT SOURCE

LED Power	100 W
Led driver Power Efficiency	97 %
Total Power	100 W
LED Light Output	180 lm/W
Current Efficiency	92 %
LED Luminous Flux	18000 lm
Junction Temperature at Ta = 25°C	65°C
Thermal Efficiency	92 %
Real Luminaire Efficacy (LER)	180 lm/W
Color Rendering Index (CRI)	70-85
Real Lamp Luminous Flux for:	100 W
Outdoor White	18000 lm
Neutral White	16560 lm
Warm White	15235 lm
Lifespan L80	100000 h

BATTERY

Type	Sealed maintenance free, Flame retardant, Lithium cell
Capacity	100 Ah
Nominal voltage	25.6 V
Charging	built in intelligent charge controller (BMS & MPPT)
Lifespan	10 years (3650 charging cycles)

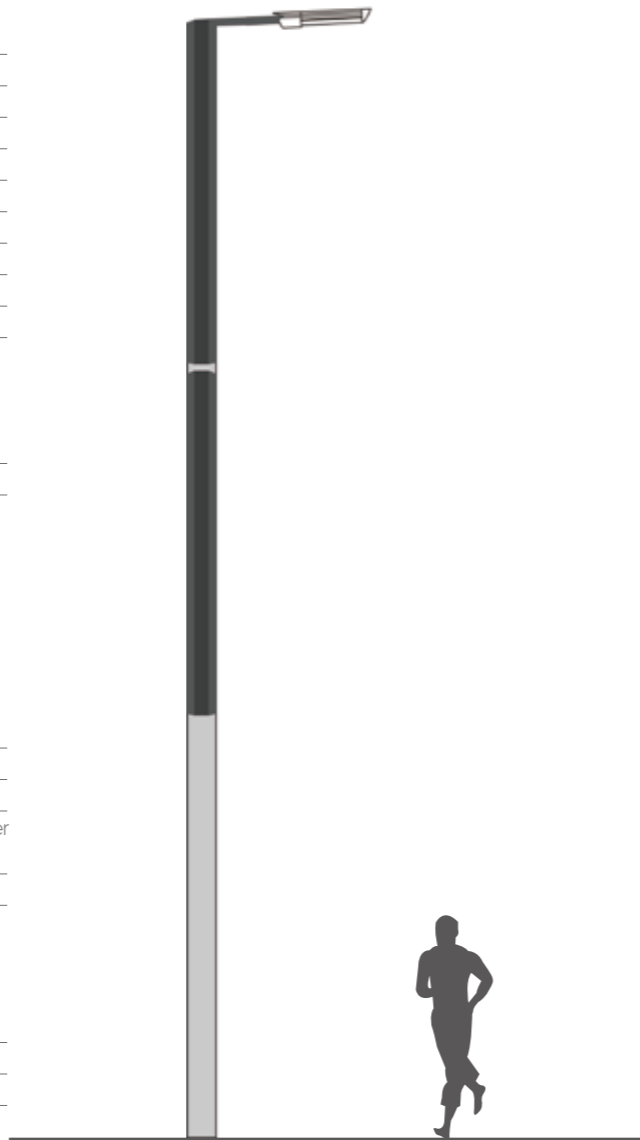
SOLAR MODULE

Type	Monocrystalline
Peak power	720 Wp
Lifespan	25 years

PARAMETERS OF THE MECHANICAL CONSTRUCTION

Realization	Aluminum cast alloy + Polycarbonate UV stabilized
Height	9000 mm
Tube diameter	300x300 mm
Diameter of the pole at the place of fixing	from ø 120 up to ø 140 mm

Quality Assurance ISO 9001:2018
Certificate:CE,RoHS,IEC61215,IEC61730



SMLN-4

CHARACTERISTICS

- Automatic night/day on/off & economy late night dimming
- Autonomy in nominal mode 30 hours (2.5 nights)
- Autonomy in Late night dimming mode 45 hours (3.8 nights);
- Factory preset: 50 % illuminance decreasing after 4 hours till 1 h before dawn;
- User specified: illuminance decreasing 1-100 %;
 - dimming start 2-8 hours;
 - dimming stop 0.5 - 3 h before dawn.
- Remote control available
- Operating temperature from -35° up to +65°C
- Maximum air humidity 95 %

LIGHT SOURCE

LED Power	2x80 W
Led driver Power Efficiency	97 %
Total Power	160 W
LED Light Output	180 lm/W
Current Efficiency	92 %
LED Luminous Flux	28800 lm
Junction Temperature at Ta = 25°C	65°C
Thermal Efficiency	92 %
Real Luminaire Efficacy (LER)	180 lm/W
Color Rendering Index (CRI)	70-85
Real Lamp Luminous Flux for:	160 W
Outdoor White	28800 lm
Neutral White	26496 lm
Warm White	24376 lm
Lifespan L80	100000 h

BATTERY

Type	Sealed maintenance free, Flame retardant, Lithium cell
Capacity	160 Ah
Nominal voltage	25.6 V
Charging	built in intelligent charge controller (BMS & MPPT)
Lifespan	10 years (3650 charging cycles)

SOLAR MODULE

Type	Monocrystalline
Peak power	900 Wp
Lifespan	25 years

PARAMETERS OF THE MECHANICAL CONSTRUCTION

Realization	Aluminum cast alloy + Polycarbonate UV stabilized
Height	10000 mm
Tube diameter	300x300 mm
Diameter of the pole at the place of fixing	from ø 120 up to ø 140 mm

Quality Assurance ISO 9001:2018
Certificate:CE,RoHS,IEC61215,IEC61730

